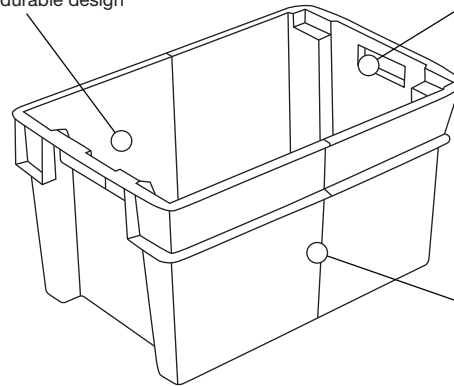




strong and durable design



ergonomic handles for safety and comfort

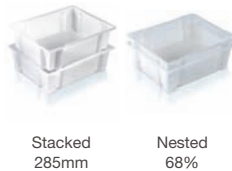
bi-colour for quick identification of stacked and nested positions

Containers that stack and nest through 180° rotation.

○ SN111104

One piece moulded 180° turn stacking and nesting container.
suitable for:

- food processing
- meat products



Stacked
285mm

Nested
68%

Technical specification

| | |
|---------------|-------------------|
| Ext.Top Dim. | 510 x 400 x 150mm |
| Int.Base Dim. | 410 x 300 x 130mm |
| Load | 90kg on base tray |
| Capacity | 23 litres |
| Weight | 1.1kg |
| Material | Polypropylene |
| Colour | Natural |



○ SN700601

Stack and nest container. Lid is perforated ref. no. LI151401.
suitable for:

- distribution of 'day old chicks'



Dolly
DO484901



Lid
LI151401



Stacked
235mm

Nested
50%

Technical specification

| | |
|---------------|-------------------------|
| Ext.Top Dim. | 600 x 400 x 120mm |
| Int.Base Dim. | 268 x 362 x 111 x 2 off |
| Load | 82kg on base tray |
| Capacity | 22 litres |
| Weight | 1.2kg |
| Material | Polypropylene |
| Colour | Black |



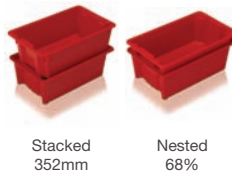
○ SN600004

Stack and nest container by 180° turn method. Fully solid with clean lines.
suitable for:

- parts storage
- food preparation



Dolly
DO484901



Stacked
352mm

Nested
68%

Technical specification

| | |
|---------------|--------------------|
| Ext.Top Dim. | 595 x 390 x 185mm |
| Int.Base Dim. | 460 x 320 x 160mm |
| Load | 112kg on base tray |
| Capacity | 24 litres |
| Weight | 1.3kg |
| Material | Polypropylene |
| Colour | Red |



○ SN599004

Double sized stack and nest container by 180° turn method. Fully solid with clean lines.
suitable for:

- handling of textiles



Dolly
DO795904



Stacked
721mm

Nested
78%

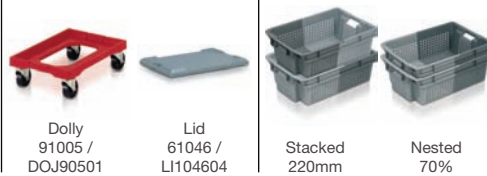
Technical specification

| | |
|---------------|--------------------|
| Ext.Top Dim. | 800 x 597 x 370mm |
| Int.Base Dim. | 650 x 490 x 350mm |
| Load | 192kg on base tray |
| Capacity | 110 litres |
| Weight | 4.6kg |
| Material | Polypropylene |
| Colour | Red |



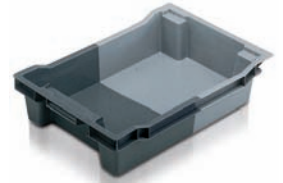
○ 11018 / SN101804

Containers securely stack when loaded and nested, by turning through 180°, to save space when not in use. Bi-colour design clearly identifies stacking and nesting positions. Solid sides and base.



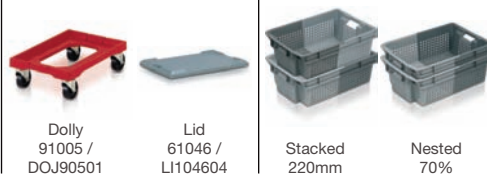
Technical specification

| | |
|-----------|-------------------|
| Ext. Dim. | 600 x 400 x 117mm |
| Int. Dim. | 458 x 338 x 102mm |
| Capacity | 18 litres |
| Weight | 1.18kg |
| Material | HDPE |
| Colour | Grey/light grey |



○ 11020 / SN102001

Containers securely stack when loaded and nested, by turning through 180°, to save space when not in use. Bi-colour design clearly identifies stacking and nesting positions. Ventilated sides and base.



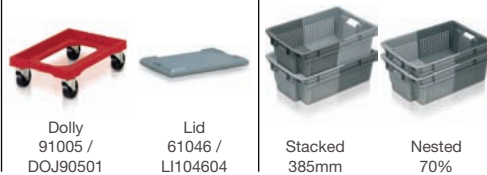
Technical specification

| | |
|-----------|-------------------|
| Ext. Dim. | 600 x 400 x 117mm |
| Int. Dim. | 458 x 338 x 102mm |
| Capacity | 18 litres |
| Weight | 1.09kg |
| Material | HDPE |
| Colour | Grey/light grey |



○ 11032 / SN110305

Containers securely stack when loaded and nested, by turning through 180°, to save space when not in use. Bi-colour design clearly identifies stacking and nesting positions. Solid sides and base.



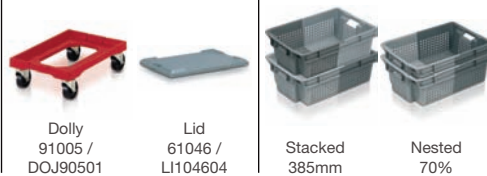
Technical specification

| | |
|-----------|---------------------------|
| Ext. Dim. | 600 x 400 x 200mm |
| Int. Dim. | 457 x 338 x 177mm |
| Capacity | 32 litres |
| Weight | 1.84kg |
| Material | HDPE |
| Colour | Grey/light grey, grey/red |



○ 11034 / SN110301

Containers securely stack when loaded and nested, by turning through 180°, to save space when not in use. Bi-colour design clearly identifies stacking and nesting positions. Ventilated sides and base.



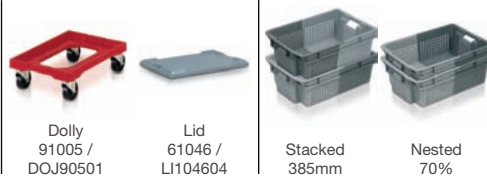
Technical specification

| | |
|-----------|-------------------|
| Ext. Dim. | 600 x 400 x 200mm |
| Int. Dim. | 457 x 338 x 177mm |
| Capacity | 32 litres |
| Weight | 1.6kg |
| Material | HDPE |
| Colour | Grey/light grey |



○ 11035 / SNR13506

Containers securely stack when loaded and nested, by turning through 180°, to save space when not in use. Bi-colour design clearly identifies stacking and nesting positions. Solid base and ventilated sides.



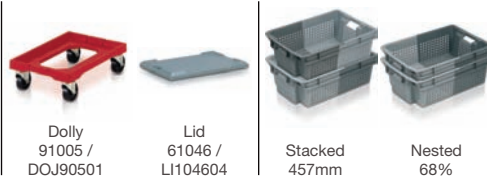
Technical specification

| | |
|-----------|-------------------|
| Ext. Dim. | 600 x 400 x 200mm |
| Int. Dim. | 457 x 338 x 177mm |
| Capacity | 33 litres |
| Weight | 1.71kg |
| Material | HDPE |
| Colour | Grey/light grey |



○ 11037 / SN103701

Containers securely stack when loaded and nested, by turning through 180°, to save space when not in use. Ventilated sides and base.



Technical specification

| | |
|-----------|-------------------|
| Ext. Dim. | 600 x 400 x 236mm |
| Int. Dim. | 460 x 340 x 205mm |
| Capacity | 37 litres |
| Weight | 1.64kg |
| Material | HDPE |
| Colour | Orange |



○ 11051 / SN105105

Containers securely stack when loaded and nested, by turning through 180°, to save space when not in use. Bi-colour design clearly identifies stacking and nesting positions. Solid sides and base.



Dolly
91005 /
DOJ90501

Lid
61046 /
LH104604

Stacked
585mm

Nested
70%

Technical specification

| | |
|-----------|---------------------------|
| Ext. Dim. | 600 x 400 x 300mm |
| Int. Dim. | 460 x 340 x 270mm |
| Capacity | 50 litres |
| Weight | 2.3kg |
| Material | HDPE |
| Colour | Grey/light grey, grey/red |



○ 11053 / SNR15306

Containers securely stack when loaded and nested, by turning through 180°, to save space when not in use. Bi-colour design clearly identifies stacking and nesting positions. Solid base, ventilated sides.



Dolly
91005 /
DOJ90501

Lid
61046 /
LH104604

Stacked
585mm

Nested
70%

Technical specification

| | |
|-----------|-------------------|
| Ext. Dim. | 600 x 400 x 300mm |
| Int. Dim. | 460 x 340 x 270mm |
| Capacity | 50 litres |
| Weight | 2.27kg |
| Material | HDPE |
| Colour | Grey/light grey |



○ 11052 / SN105201

Containers securely stack when loaded and nested, by turning through 180°, to save space when not in use. Bi-colour design clearly identifies stacking and nesting positions. Ventilated sides and base.



Dolly
91005 /
DOJ90501

Lid
61046 /
LH104604

Stacked
585mm

Nested
70%

Technical specification

| | |
|-----------|-------------------|
| Ext. Dim. | 600 x 400 x 300mm |
| Int. Dim. | 460 x 340 x 270mm |
| Capacity | 50 litres |
| Weight | 2.1kg |
| Material | HDPE |
| Colour | Grey/light grey |



○ 11065 / SN106505

Containers securely stack when loaded and nested, by turning through 180°, to save space when not in use. Bi-colour design clearly identifies stacking and nesting positions. Solid sides and base.



Dolly
91005 /
DOJ90501

Lid
61046 /
LH104604

Stacked
785mm

Nested
70%

Technical specification

| | |
|-----------|-------------------|
| Ext. Dim. | 600 x 400 x 400mm |
| Int. Dim. | 460 x 340 x 370mm |
| Capacity | 70 litres |
| Weight | 3.06kg |
| Material | HDPE |
| Colour | Grey/light grey |



○ 11066 / SN106601

Containers securely stack when loaded and nested, by turning through 180°, to save space when not in use. Bi-colour design clearly identifies stacking and nesting positions. Ventilated sides and base.



Dolly
91005 /
DOJ90501

Lid
61046 /
LH104604

Stacked
785mm

Nested
70%

Technical specification

| | |
|-----------|-------------------|
| Ext. Dim. | 600 x 400 x 400mm |
| Int. Dim. | 460 x 340 x 370mm |
| Capacity | 70 litres |
| Weight | 2.65kg |
| Material | HDPE |
| Colour | Grey |



○ 11067 / SNR16706

Containers securely stack when loaded and nested, by turning through 180°, to save space when not in use. Bi-colour design clearly identifies stacking and nesting positions. Solid base, ventilated sides.



Dolly
91005 /
DOJ90501

Lid
61046 /
LH104604

Stacked
785mm

Nested
70%

Technical specification

| | |
|-----------|-------------------|
| Ext. Dim. | 600 x 400 x 400mm |
| Int. Dim. | 460 x 340 x 370mm |
| Capacity | 70 litres |
| Weight | 2.75kg |
| Material | HDPE |
| Colour | Grey |



○ 12035 / SN203505

Containers stack securely when loaded and nest, by turning through 180°, to save space when not in use.



Stacked
520mm

Nested
70%

Technical specification

Ext. Dim. 500 x 400 x 270mm
Int. Dim. 370 x 340 x 240mm
Capacity 35 litres
Weight 1.8kg
Material HDPE
Colour White



○ 11044 / SN104405

Containers stack securely when loaded and nest, by turning through 180°, to save space when not in use.



Stacked
360mm

Nested
70%

Technical specification

Ext. Dim. 755 x 435 x 190mm
Int. Dim. 680 x 360 x 170mm
Capacity 44 litres
Weight 2.25kg
Material HDPE
Colour Red



○ 11060 / SN106005

Containers stack securely when loaded and nest, by turning through 180°, to save space when not in use.



Stacked
520mm

Nested
70%

Technical specification

Ext. Dim. 800 x 450 x 270mm
Int. Dim. 620 x 370 x 230mm
Capacity 60 litres
Weight 3.68kg
Material HDPE
Colour Grey/red



○ 12070 / SN207005

Containers stack securely when loaded and nest, by turning through 180°, to save space when not in use.



Stacked
564mm

Nested
68%

Technical specification

Ext. Dim. 800 x 450 x 292mm
Int. Dim. 620 x 370 x 257mm
Capacity 66 litres
Weight 4.06kg
Material HDPE
Colour Red



○ 11048 / SN104801

Containers stack securely when loaded and nest, by turning through 180°, to save space when not in use.



Stacked
409mm

Nested
49%

Technical specification

Ext. Dim. 665 x 460 x 212mm
Int. Dim. 625 x 400 x 194mm
Capacity 48 litres
Weight 2.45kg
Material HDPE
Colour Grey



○ 12061 / SN120604

Containers stack securely when loaded and nest, by turning through 180°, to save space when not in use.



Stacked
520mm

Nested
70%

Technical specification

Ext. Dim. 800 x 450 x 270mm
Int. Dim. 620 x 370 x 230mm
Capacity 60 litres
Weight 3.88kg
Material HDPE
Colour White



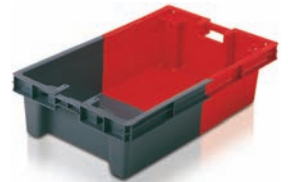
○ 11075 / SN107505

Containers stack securely when loaded and nest, by turning through 180°, to save space when not in use.

Stacked
450mmNested
70%

Technical specification

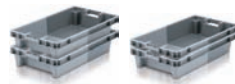
| | |
|-----------|-------------------|
| Ext. Dim. | 890 x 560 x 235mm |
| Int. Dim. | 695 x 475 x 200mm |
| Capacity | 75 litres |
| Weight | 4.15kg |
| Material | HDPE |
| Colour | Grey/red |



○ 12A30

Technical specification

| | |
|---------------|-------------------|
| Ext. Dim. | 800 x 450 x 150mm |
| Int. Dim. | 620 x 370 x 115mm |
| Nested Height | 46mm |
| Capacity | 30 litres |
| Weight | 2.5kg |
| Colour | Grey/light grey |

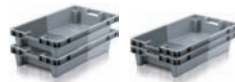
Stacked
270mmNested
46mm

○ 12A31

With external drainage.

Technical specification

| | |
|---------------|-------------------|
| Ext. Dim. | 800 x 450 x 150mm |
| Int. Dim. | 620 x 370 x 105mm |
| Nested Height | 46mm |
| Capacity | 30 litres |
| Weight | 2.5kg |
| Colour | Grey/light grey |

Stacked
270mmNested
46mm

○ 12A32

16 off 10mm Ø drainage holes, subject to minimum quantity.

Technical specification

| | |
|---------------|-------------------|
| Ext. Dim. | 800 x 450 x 150mm |
| Int. Dim. | 620 x 370 x 115mm |
| Nested Height | 46mm |
| Capacity | 30 litres |
| Weight | 2.5kg |
| Colour | Grey/light grey |

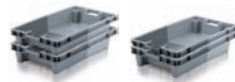
Stacked
270mmNested
46mm

○ 12041

With external drainage.

Technical specification

| | |
|---------------|-------------------|
| Ext. Dim. | 800 x 450 x 190mm |
| Int. Dim. | 624 x 372 x 155mm |
| Nested Height | 55mm |
| Capacity | 38 litres |
| Weight | 2.6kg |
| Colour | Grey/light grey |

Stacked
360mmNested
55mm