

### ○ FC643404\*

Folding container designed to work with European pallet systems. Interworks with FC465004.

suitable for:

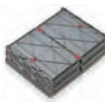
- automotive parts
- electrical goods
- communication products



Dolly  
DO484901



Stacked  
671mm



Folded  
80%

#### Technical specification

Ext.Top Dim. 600 x 400 x 400mm  
Int.Base Dim. 556 x 370 x 325mm  
Load Capacity 14kg on base tray  
Capacity 67 litres  
Weight 3.4kg  
Material Polypropylene  
Colour Grey



### ○ FC644004\* – available without lid FC644104

Concertina crate, the unique tamper evident folding container with special seals which not only secures the lid, but also the sides as well.

suitable for:

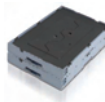
- clothing distribution
- housewares
- toys



Dolly  
D0795904



Stacked  
788mm



Folded  
83%

#### Technical specification

Ext.Top Dim. 600 x 400 x 400mm  
Int.Base Dim. 570 x 370 x 370mm  
Load Capacity 150kg on base tray  
Capacity 78 litres  
Weight 3.6kg  
Material Polypropylene  
Colour Grey



### ○ FC465004\*

Galia folding container designed to work with European pallet systems. Interworks with FC643404.

suitable for:

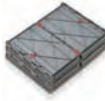
- automotive parts
- electrical goods
- textiles



Dolly  
D0795904



Stacked  
920mm



Folded  
77%

#### Technical specification

Ext.Top Dim. 800 x 600 x 465mm  
Int.Base Dim. 760 x 560 x 420mm  
Load Capacity 30kg on base tray  
Capacity 178 litres  
Weight 7.4kg  
Material Polypropylene  
Colour Grey



### ○ MF640102

Maxifold container interworks with Maxinest range by use of the swing bars which also act as a locking mechanism when in the stacked position.

suitable for:

- fresh fruit and vegetables
- packaged meat products



Dolly  
DO484901



Stacked  
378mm



Folded  
82%

#### Technical specification

Ext.Top Dim. 600 x 403 x 193mm  
Int.Base Dim. 568 x 362 x 158mm  
Load Capacity 162kg on base tray  
Capacity 37 litres  
Weight 2kg  
Material Polypropylene  
Colour Blue



### ○ MF640202

Maxifold container interworks with Maxinest range by use of the swing bars which also act as a locking mechanism when in the stacked position.

suitable for:

- fresh fruit and vegetables
- packaged meat products



Dolly  
DO484901



Stacked  
318mm



Folded  
79%

#### Technical specification

Ext.Top Dim. 600 x 403 x 163mm  
Int.Base Dim. 568 x 362 x 138mm  
Load Capacity 162kg on base tray  
Capacity 29 litres  
Weight 1.8kg  
Material Polypropylene  
Colour Black



### ○ P6423 / FC642304

Folding Galia container approved for the automotive industry.



Dolly  
91005 /  
DOJ90501



Stacked  
414mm



Folded  
65%

#### Technical specification

Ext. Dim. 600 x 400 x 214mm  
Int. Dim. 560 x 362 x 194mm  
Capacity 39 litres  
Weight 2.38kg  
Material HDPE  
Colour Green



### ○ P6433 / FC643304

Folding Galia container approved for the automotive industry.



Dolly  
91005 /  
DOJ90501



Stacked  
614mm

Folded  
76%

#### Technical specification

Ext. Dim.	600 x 400 x 314mm
Int. Dim.	560 x 362 x 294mm
Capacity	59 litres
Weight	2.96kg
Material	HDPE
Colour	Orange

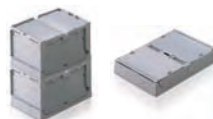


### ○ FC321804\*

Allows maximum utilisation of cube space when in use and space saving when empty.

suitable for:

- automotive and aerospace
- general engineering
- pharmaceutical and retail
- textiles and DIY



Stacked  
704mm

Folded  
67%

#### Technical specification

Ext. Top. Dim.	298 x 194 x 182mm
Int. Base. Dim.	261 x 163 x 167mm
Capacity	7 litres
Weight	0.6kg
Colour	Grey

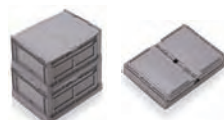


### ○ FC432204\*

Allows maximum utilisation of cube space when in use and space saving when empty.

suitable for:

- automotive and aerospace
- general engineering
- pharmaceutical and retail
- textiles and DIY



Stacked  
893mm

Folded  
72%

#### Technical specification

Ext. Top. Dim.	400 x 300 x 230mm
Int. Base. Dim.	357 x 259 x 207mm
Capacity	19 litres
Weight	1.6kg
Colour	Grey



### ○ FC642204\*

Allows maximum utilisation of cube space when in use and space saving when empty.

suitable for:

- automotive and aerospace
- general engineering
- pharmaceutical and retail
- textiles and DIY



Stacked  
885mm

Folded  
72%

#### Technical specification

Ext. Top. Dim.	600 x 400 x 228mm
Int. Base. Dim.	559 x 357 x 207mm
Capacity	41 litres
Weight	2.6kg
Colour	Grey



\*Security seals available.